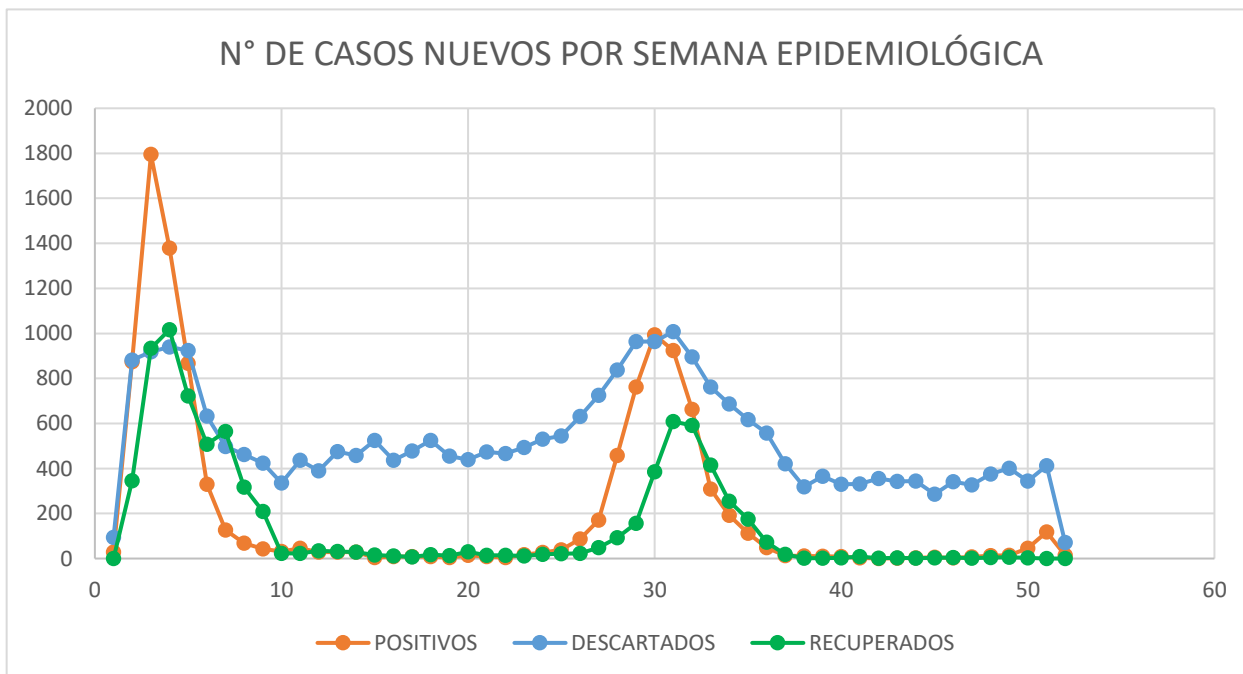
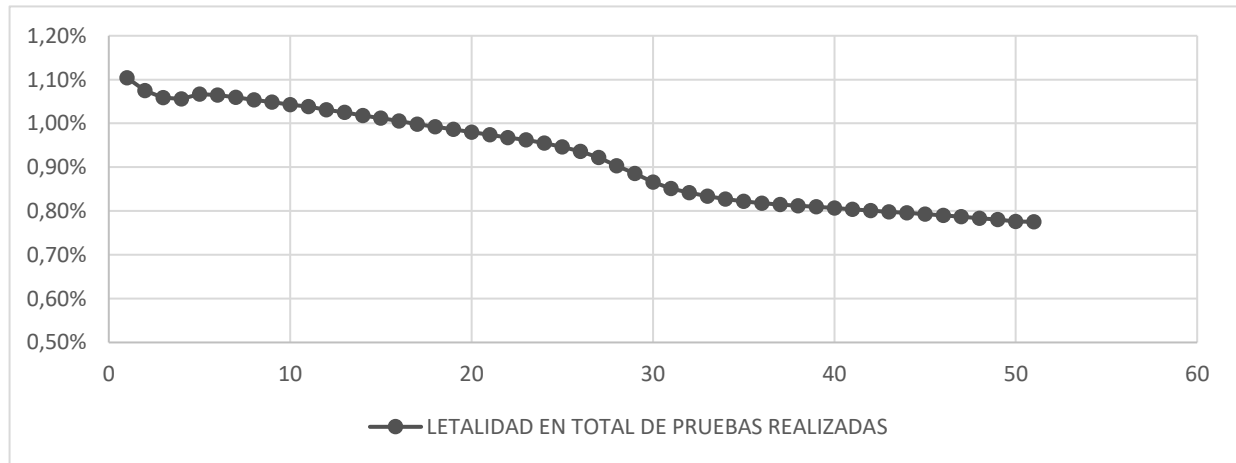
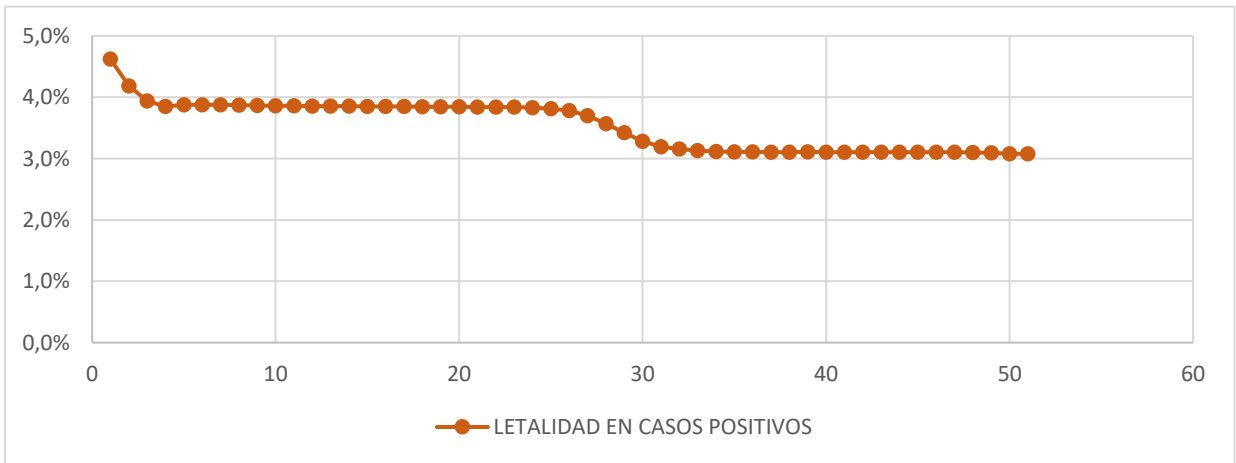
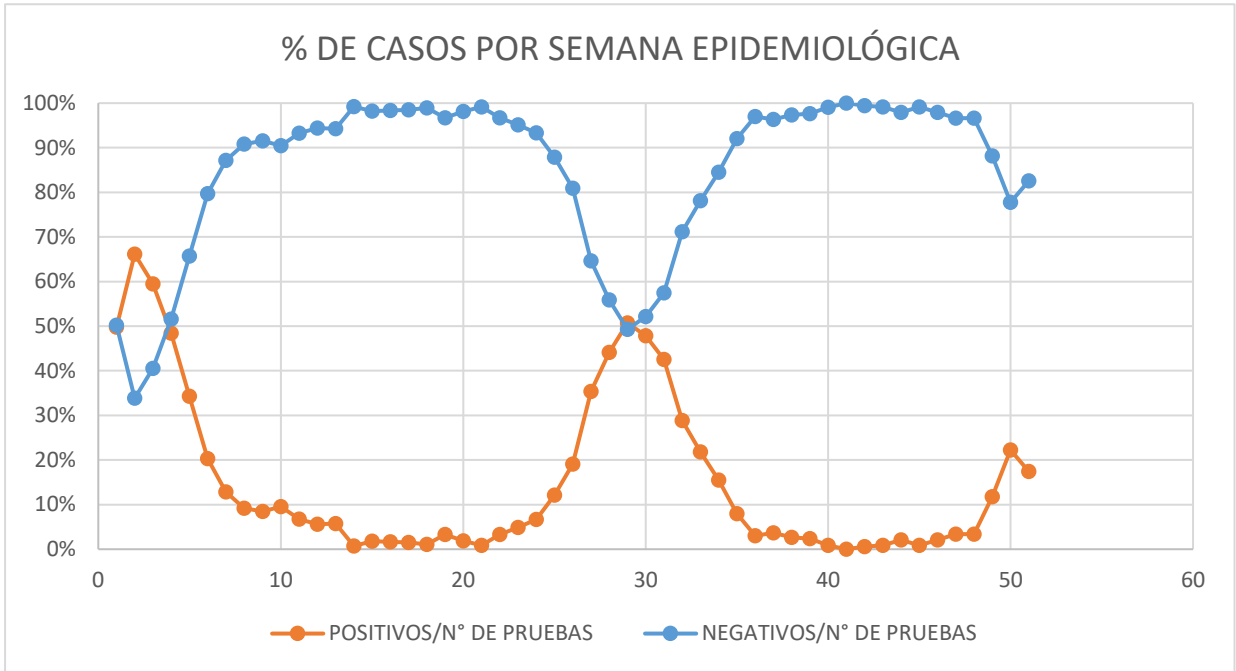


# INFORME COVID-19 FECHA: 19/12/2022

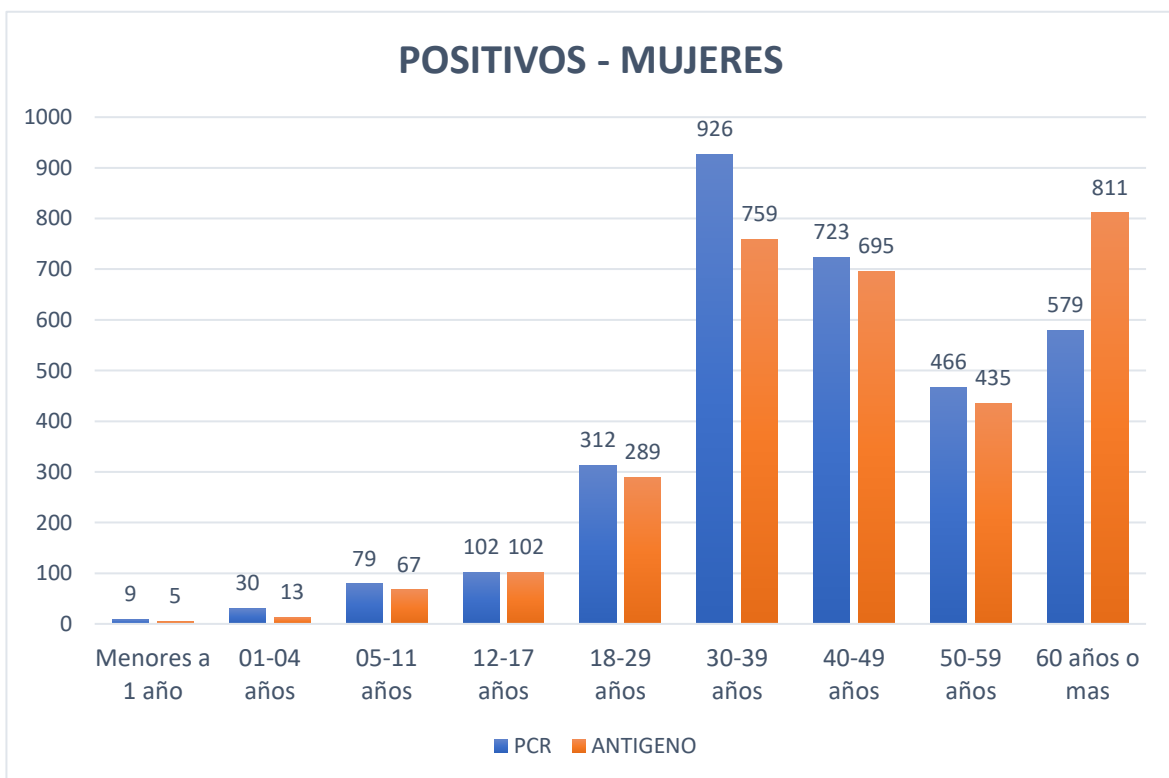
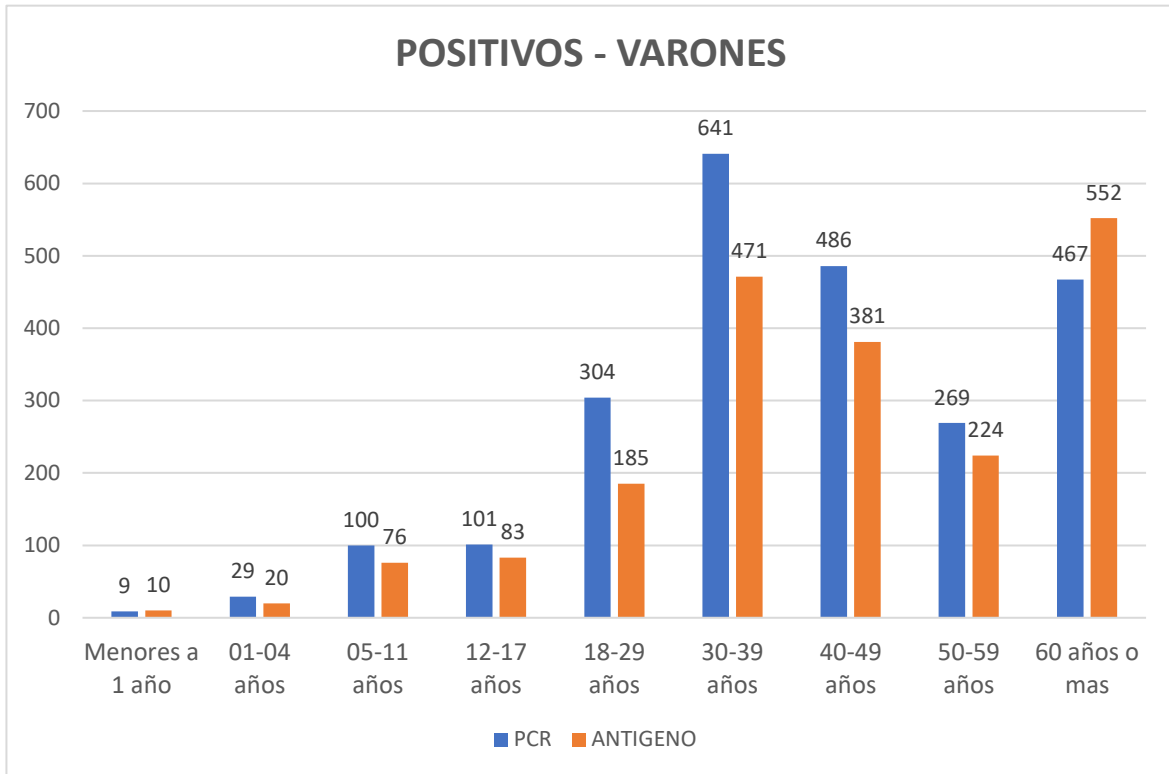
## REPORTE EPIDEMIOLÓGICO

24610 Positivos Previos	24623 TOTAL CASOS POSITIVOS	17437 Recuperados Previo	17437 TOTAL RECUPERADOS	758 N° Muertes Previo	758 TOTAL MUERTES
13 Positivos Nuevos		0 Recuperados Nuevo		0 N° Muertes Nuevo	
73080 Descartados Previos	73130 TOTAL DESCARTADOS	0 Sospechosos por confirmar (día en curso)		3,08% TASA DE LETALIDAD EN POSITIVOS	0,78% TASA DE LETALIDAD EN PRUEBAS REALIZADAS
50 Descartados Nuevos					

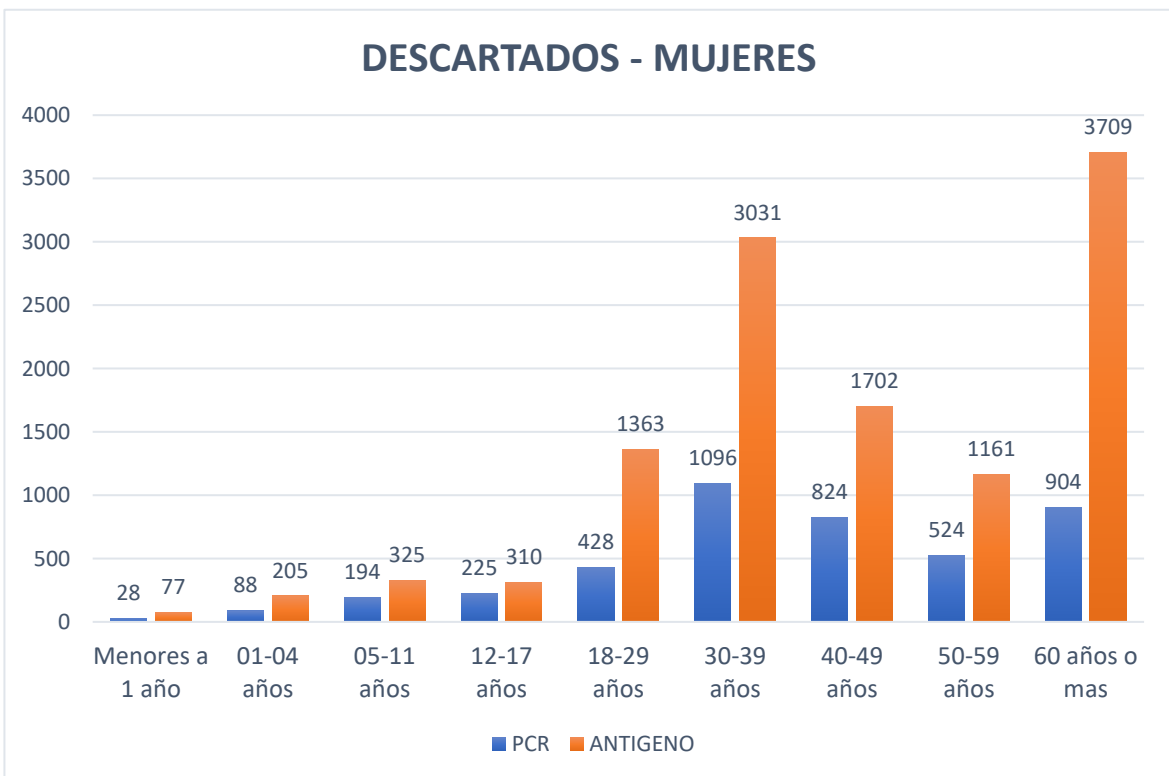
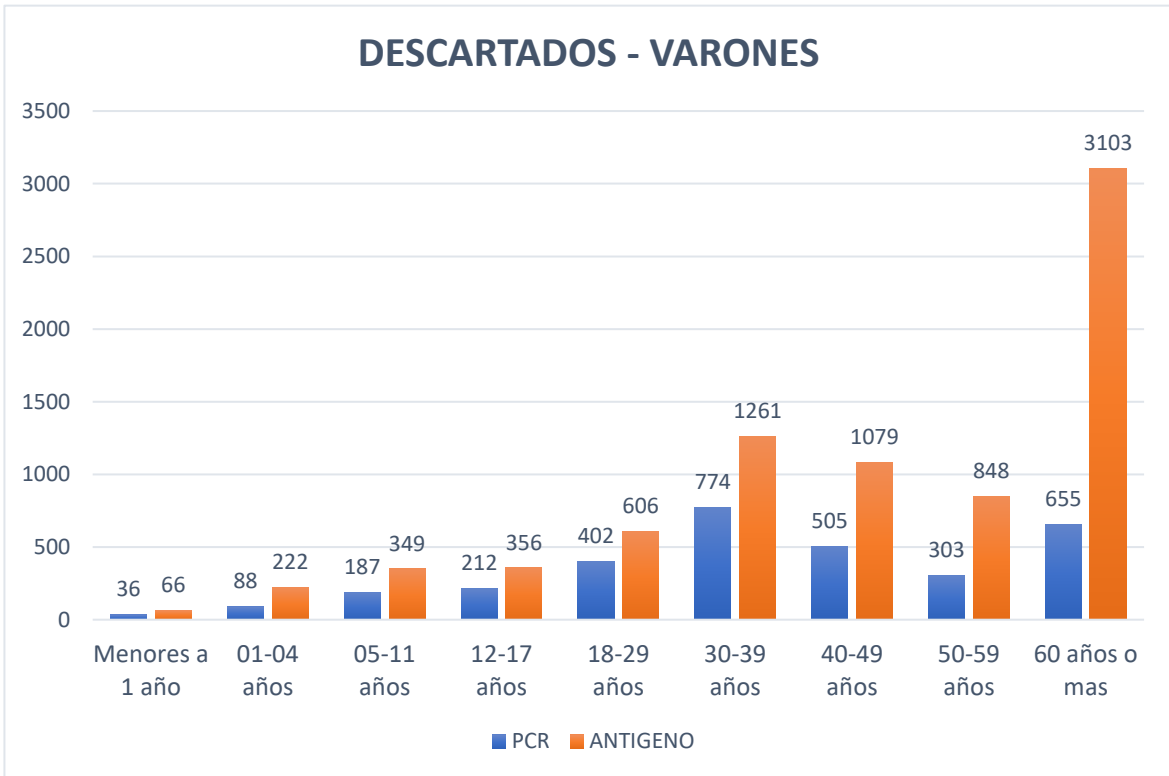




## ACUMULADO DE POSITIVOS POR GRUPO ETAREO DEL AÑO A LA FECHA



## ACUMULADO DE DESCARTADOS POR GRUPO ETAREO DEL AÑO A LA FECHA

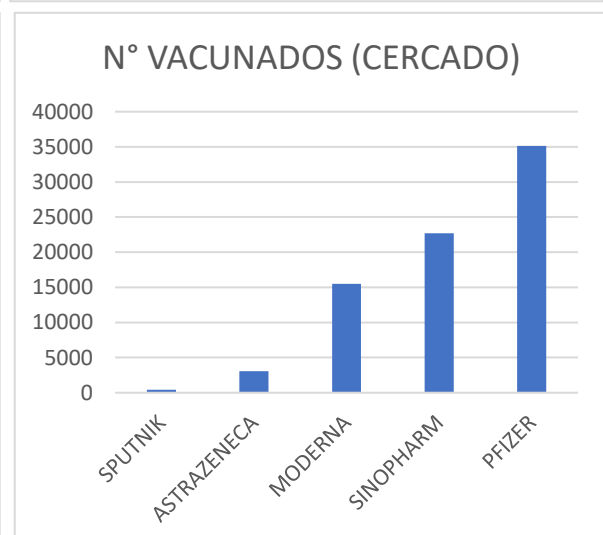
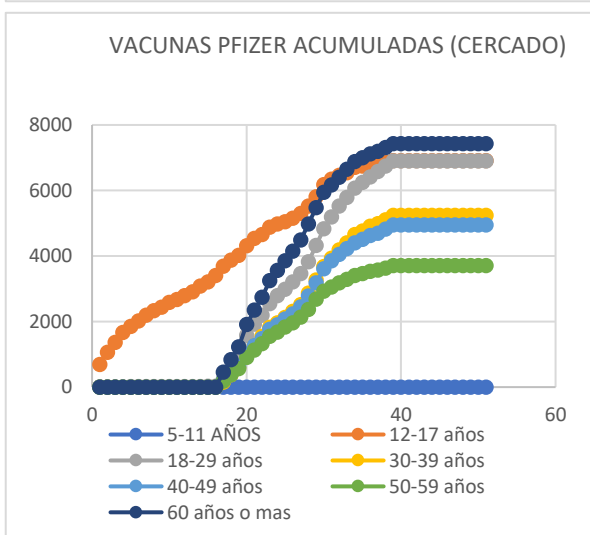
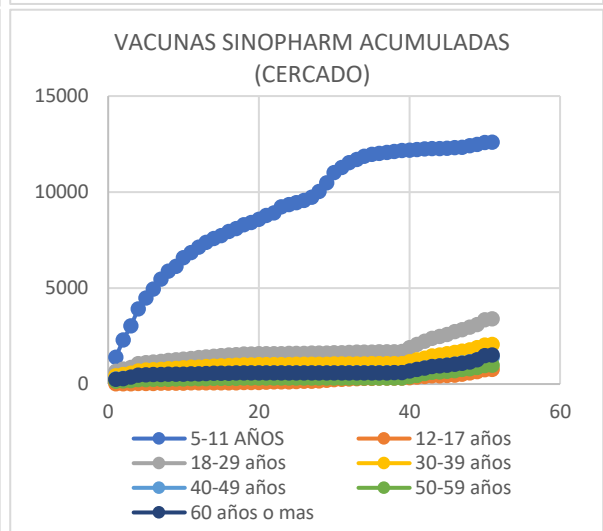
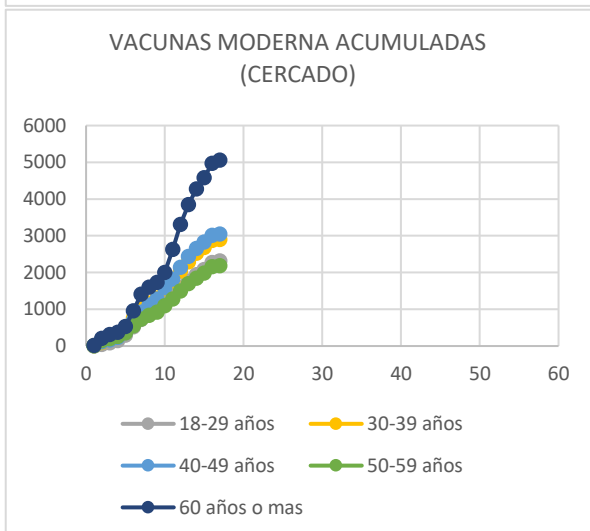
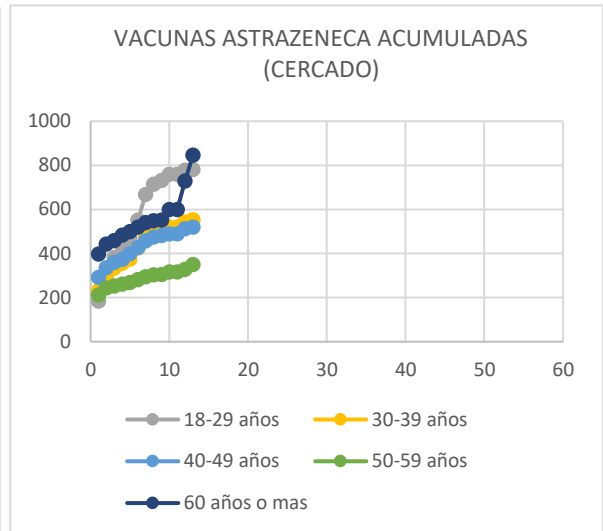
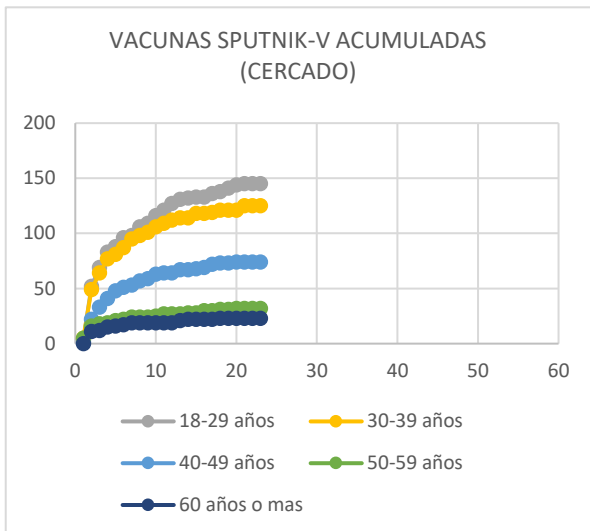


### RESUMEN DEL MES DE DICIEMBRE POR DIA

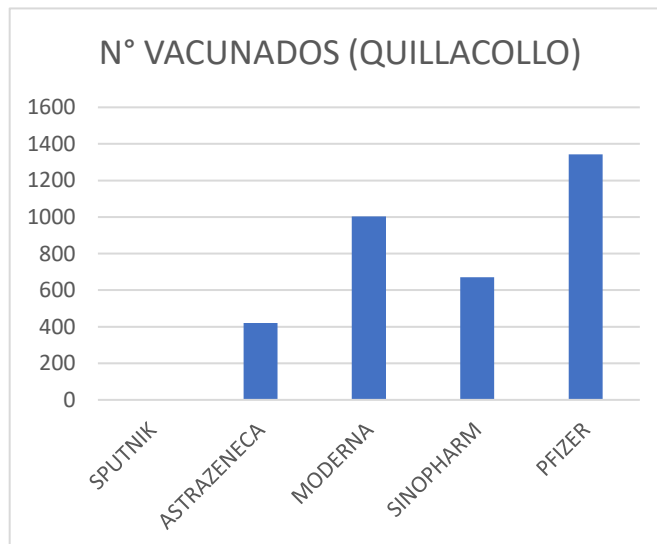
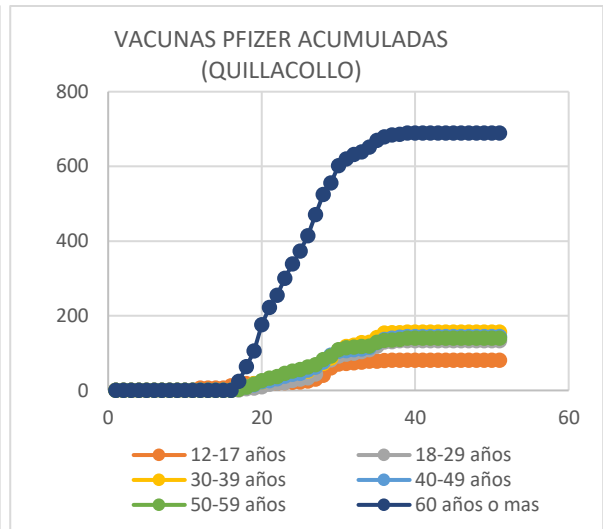
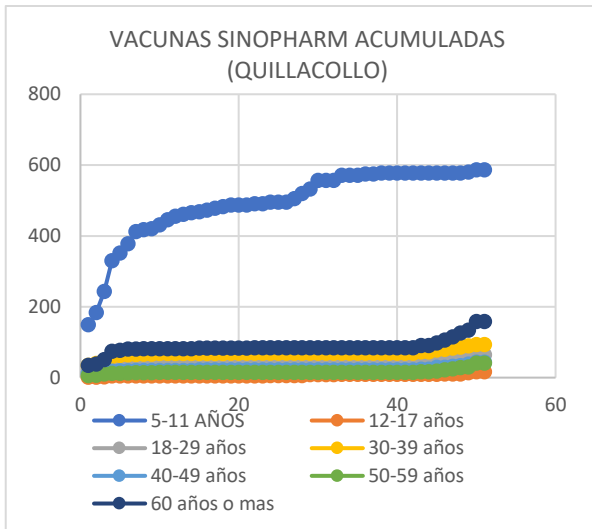
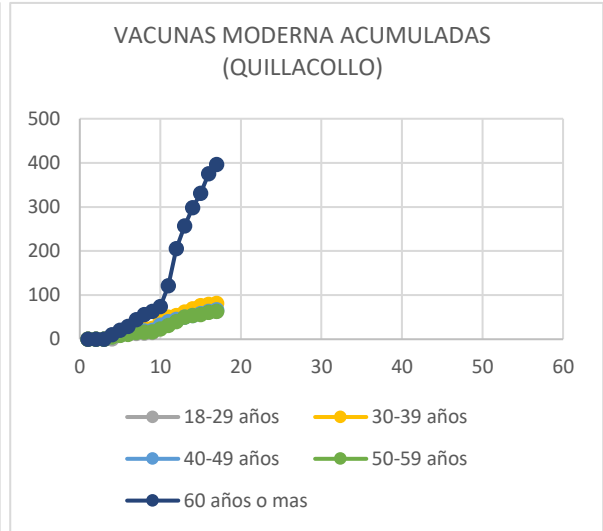
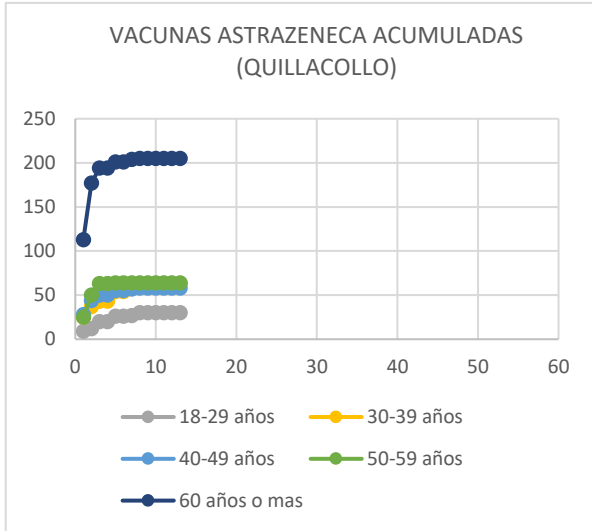
FECHA	POSITIVOS	DESCARTADOS	SOSPECHOSOS	RECUPERADOS	MUERTES
ACUMULADO A NOVIEMBRE 2022	24435	72122	13611	17428	758
01/12/2022	4	72	26	3	0
02/12/2022	4	82	17	3	0
03/12/2022	1	27	0	0	0
04/12/2022	0	25	0	0	0
05/12/2022	3	50	23	0	0
06/12/2022	9	56	26	0	0
07/12/2022	8	49	16	1	0
08/12/2022	7	51	11	2	0
09/12/2022	15	81	0	0	0
10/12/2022	4	32	0	0	0
11/12/2022	1	22	0	0	0
12/12/2022	4	41	0	0	0
13/12/2022	19	74	0	0	0
14/12/2022	13	76	0	0	0
15/12/2022	27	73	0	0	0
16/12/2022	22	65	0	0	0
17/12/2022	32	61	0	0	0
18/12/2022	2	21	0	0	0
19/12/2022	13	50	0	0	0
20/12/2022					
21/12/2022					
22/12/2022					
23/12/2022					
24/12/2022					
25/12/2022					
26/12/2022					
27/12/2022					
28/12/2022					
29/12/2022					
30/12/2022					
31/12/2022					

# REPORTE DE N° DE VACUNAS APLICADAS

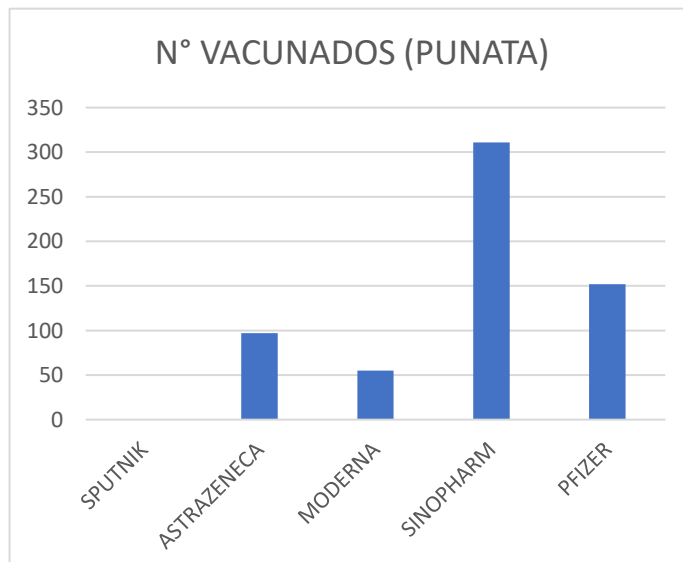
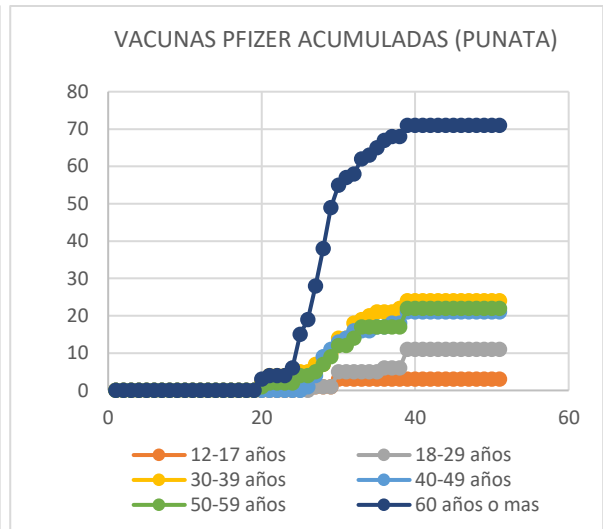
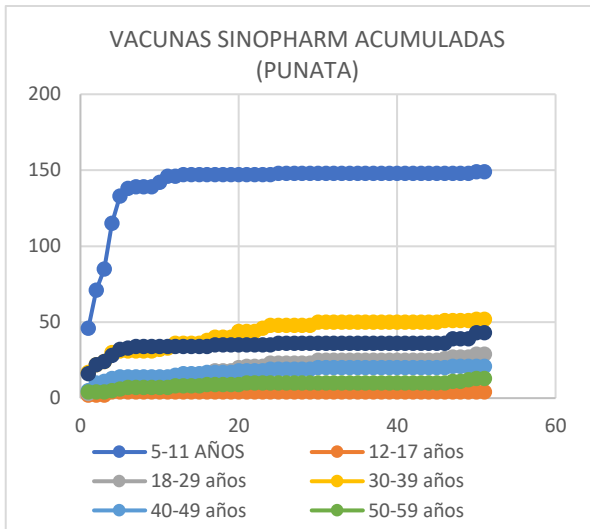
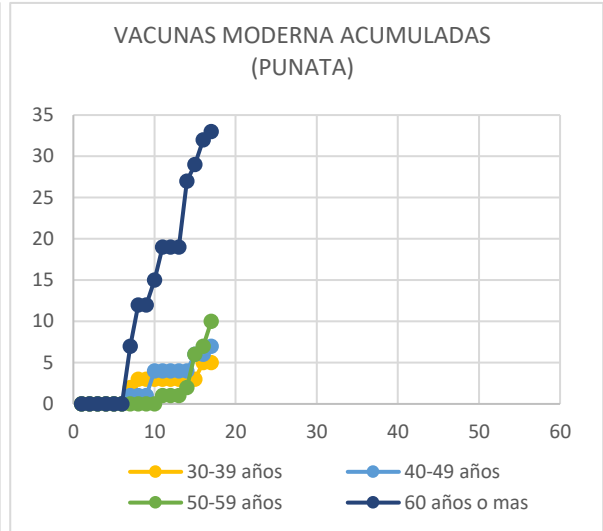
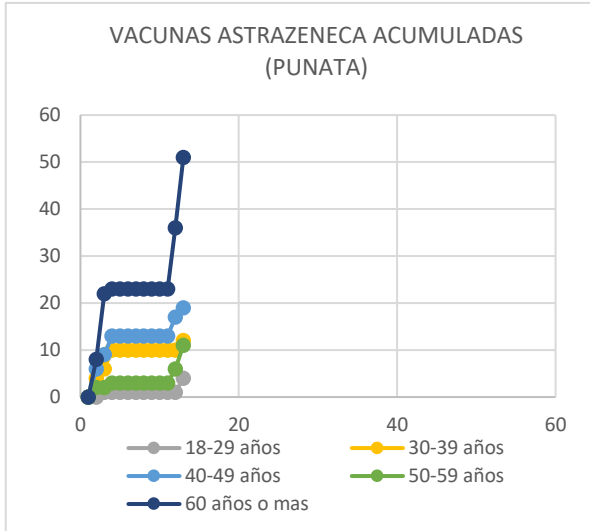
## VACUNAS CERCADO POR SEMANA EPIDEMIOLOGICA PARA GRUPO ETAREO (CNS)



## VACUNAS QUILLACOLLO POR SEMANA EPIDEMIOLOGICA PARA GRUPO ETAREO (CNS)

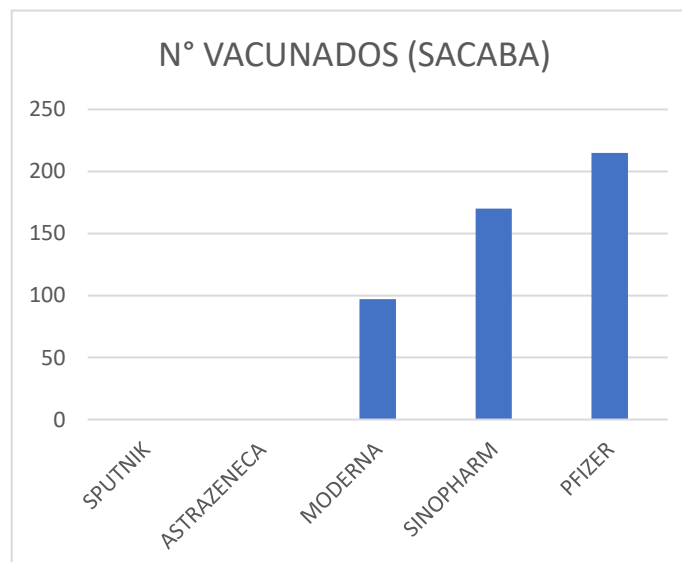
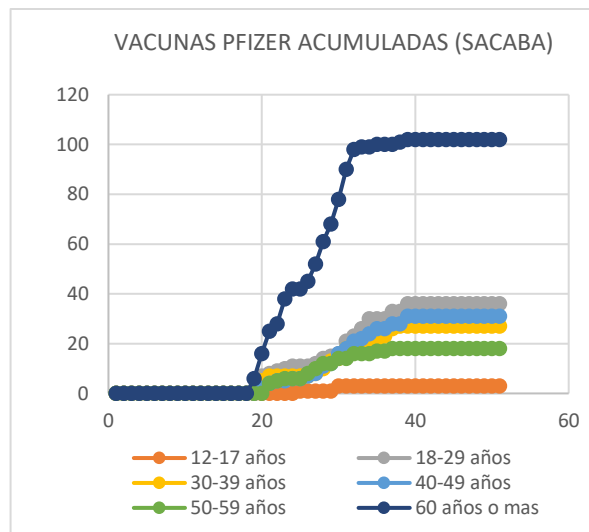
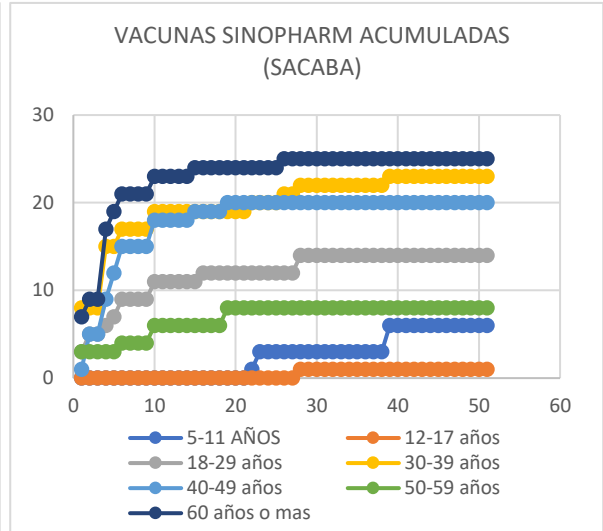
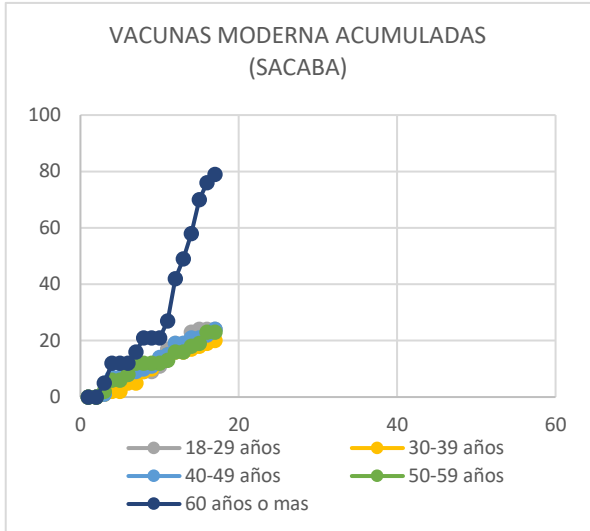


## VACUNAS PUNATA POR SEMANA EPIDEMIOLOGICA PARA GRUPO ETAREO (CNS)

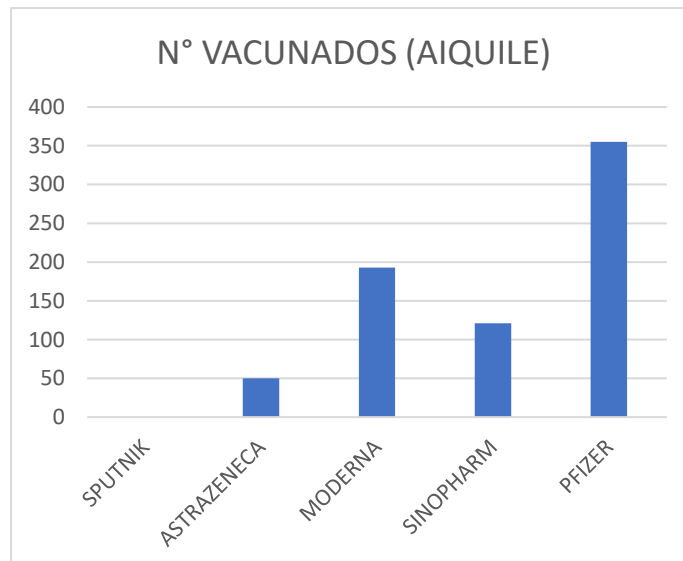
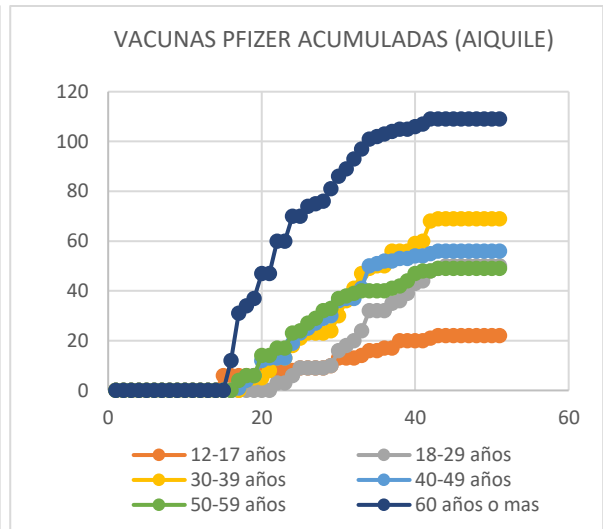
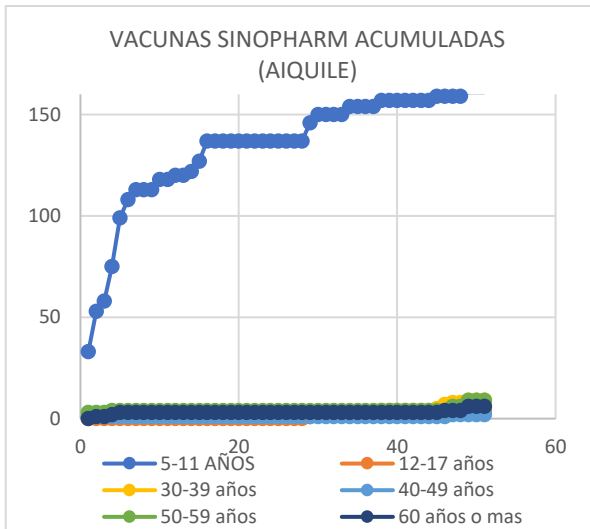
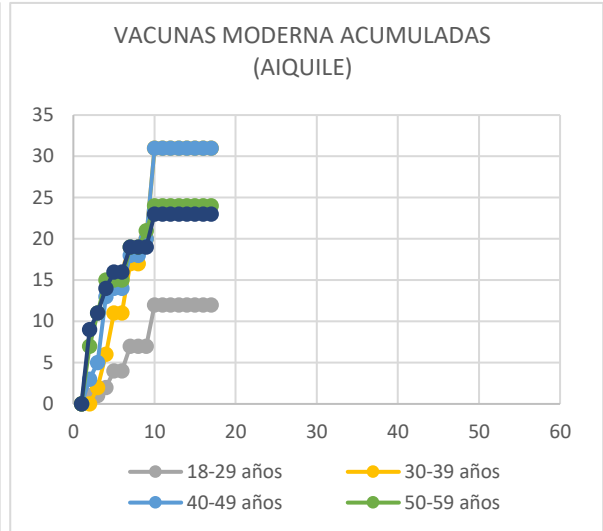
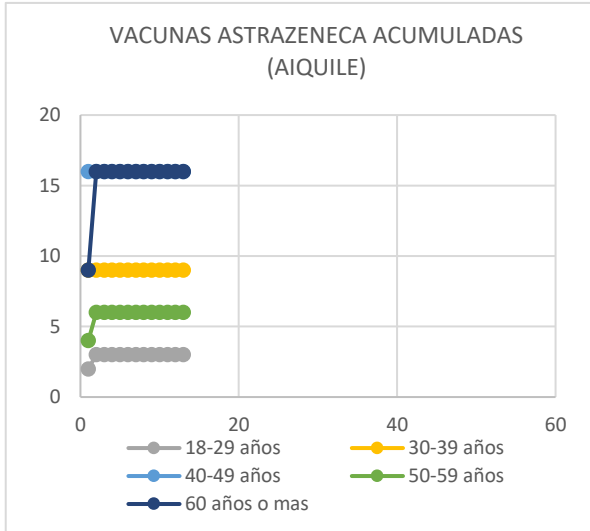




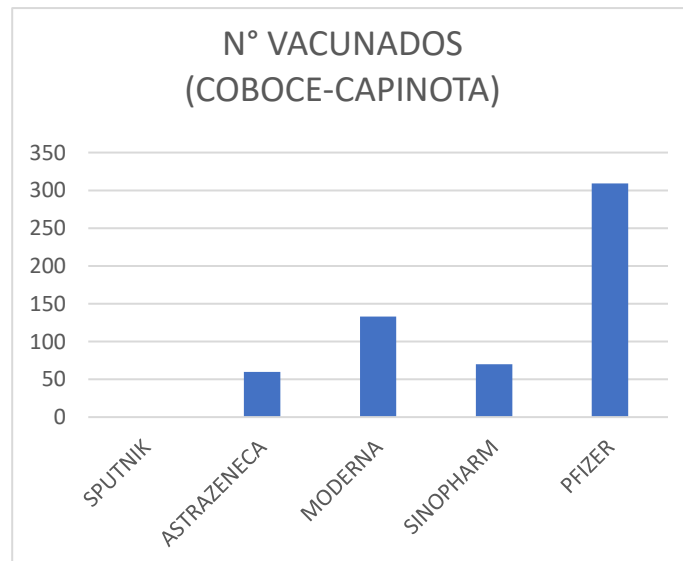
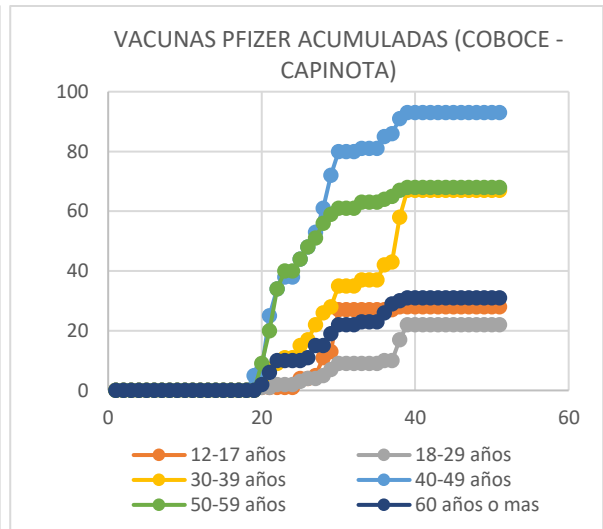
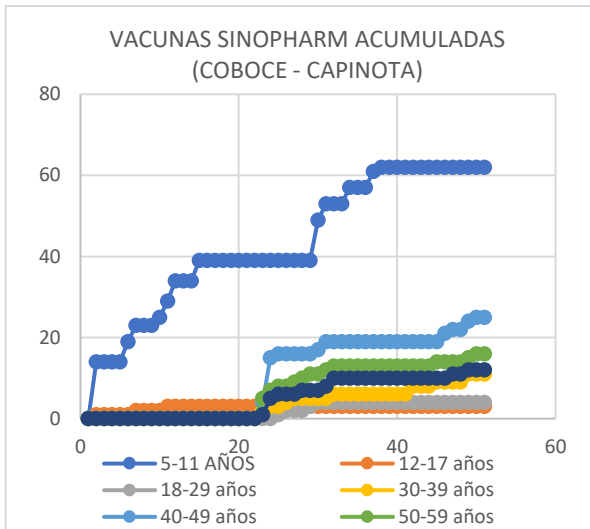
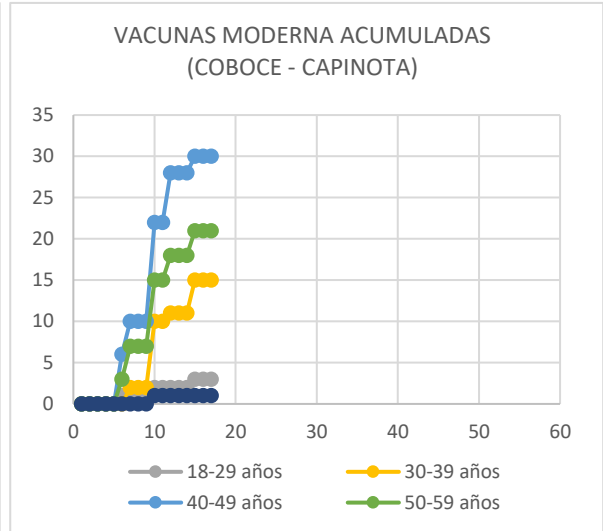
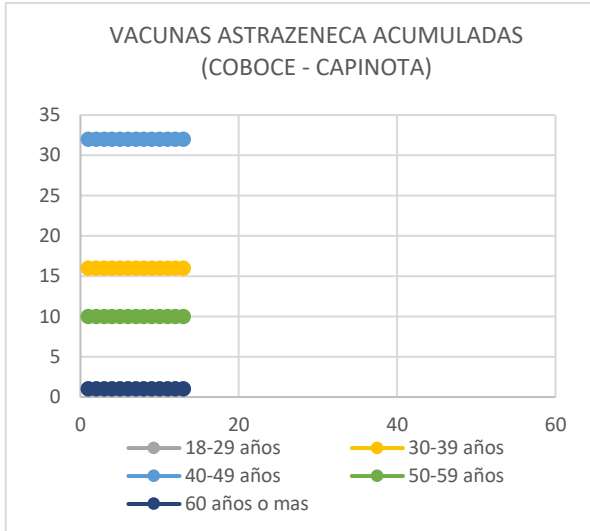
## VACUNAS SACABA POR SEMANA EPIDEMIOLOGICA PARA GRUPO ETAREO (CNS)



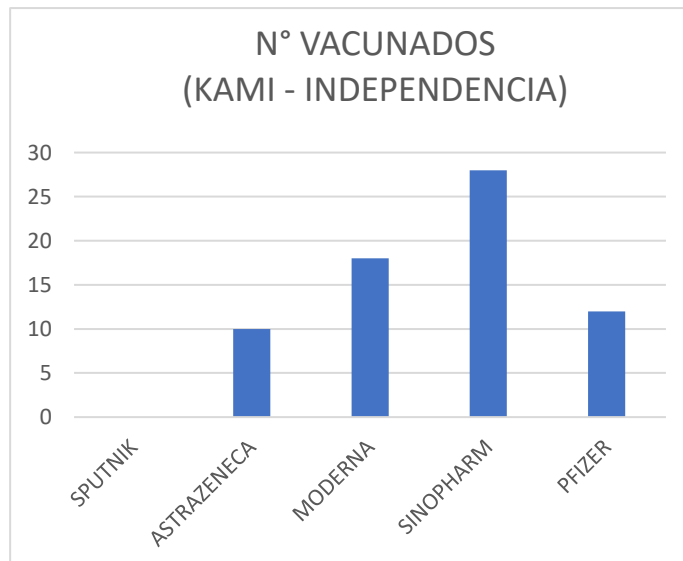
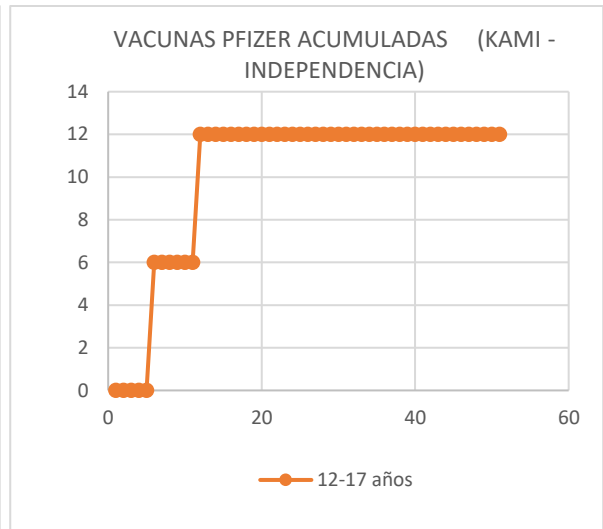
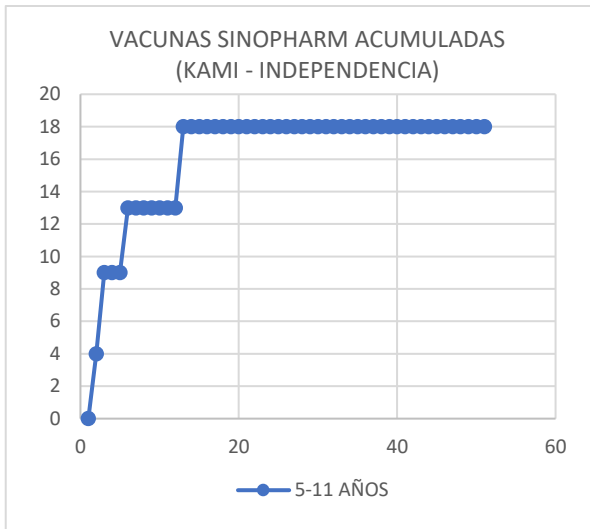
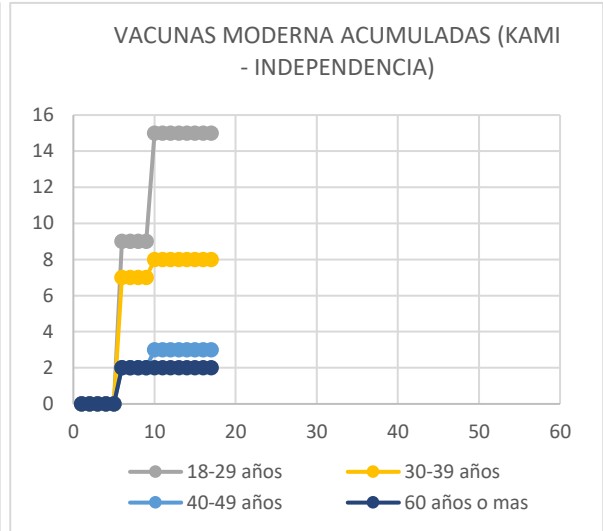
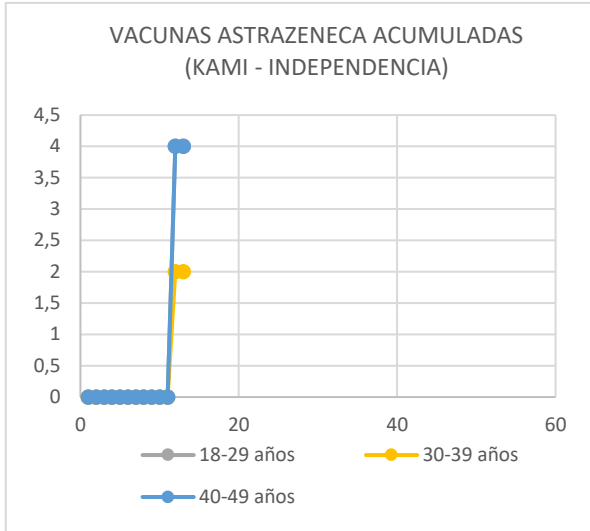
## VACUNAS AIQUILE POR SEMANA EPIDEMIOLOGICA PARA GRUPO ETAREO (CNS)



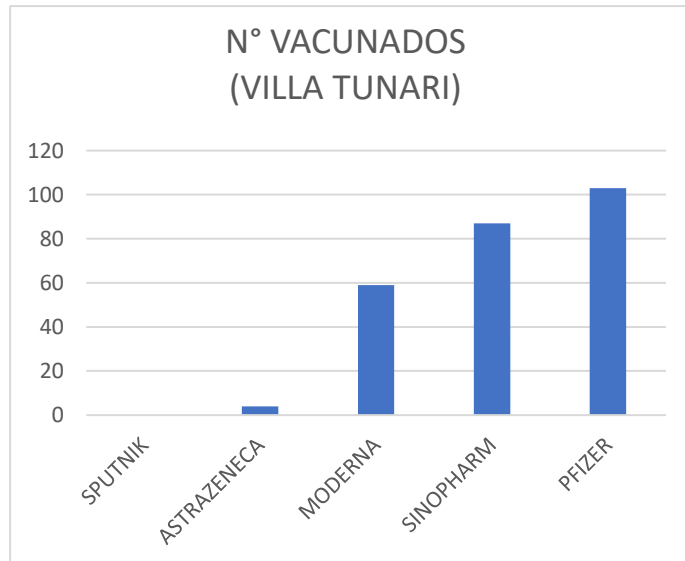
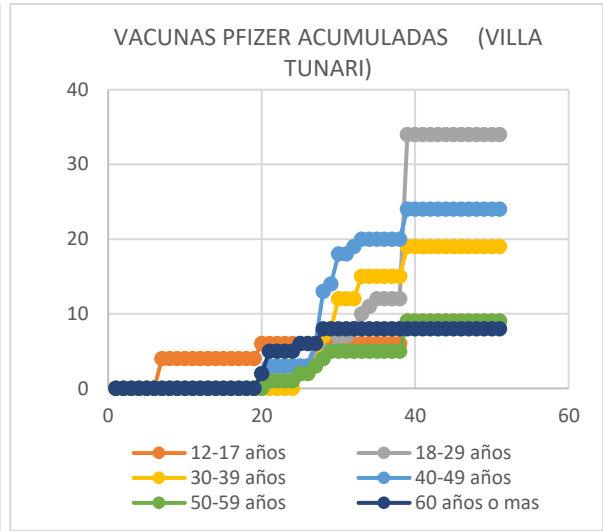
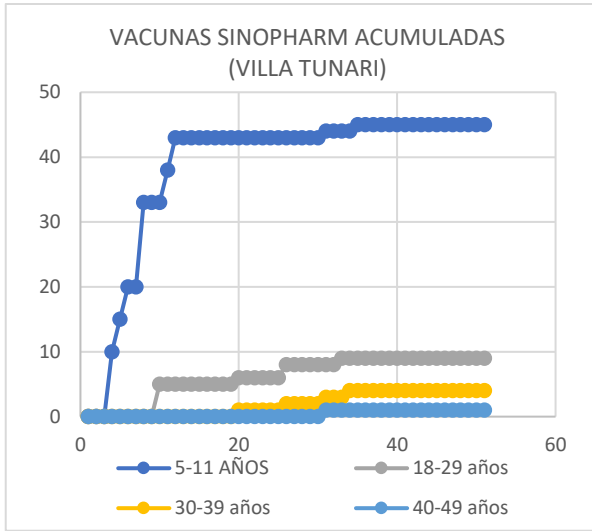
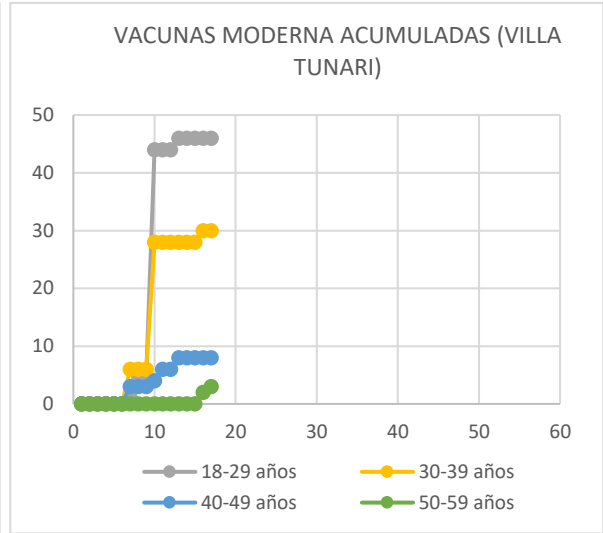
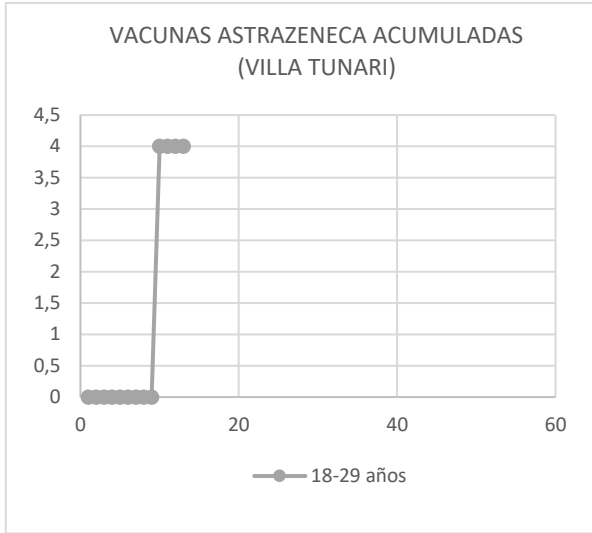
## VACUNAS COBOCE POR SEMANA EPIDEMIOLOGICA PARA GRUPO ETAREO (CNS)



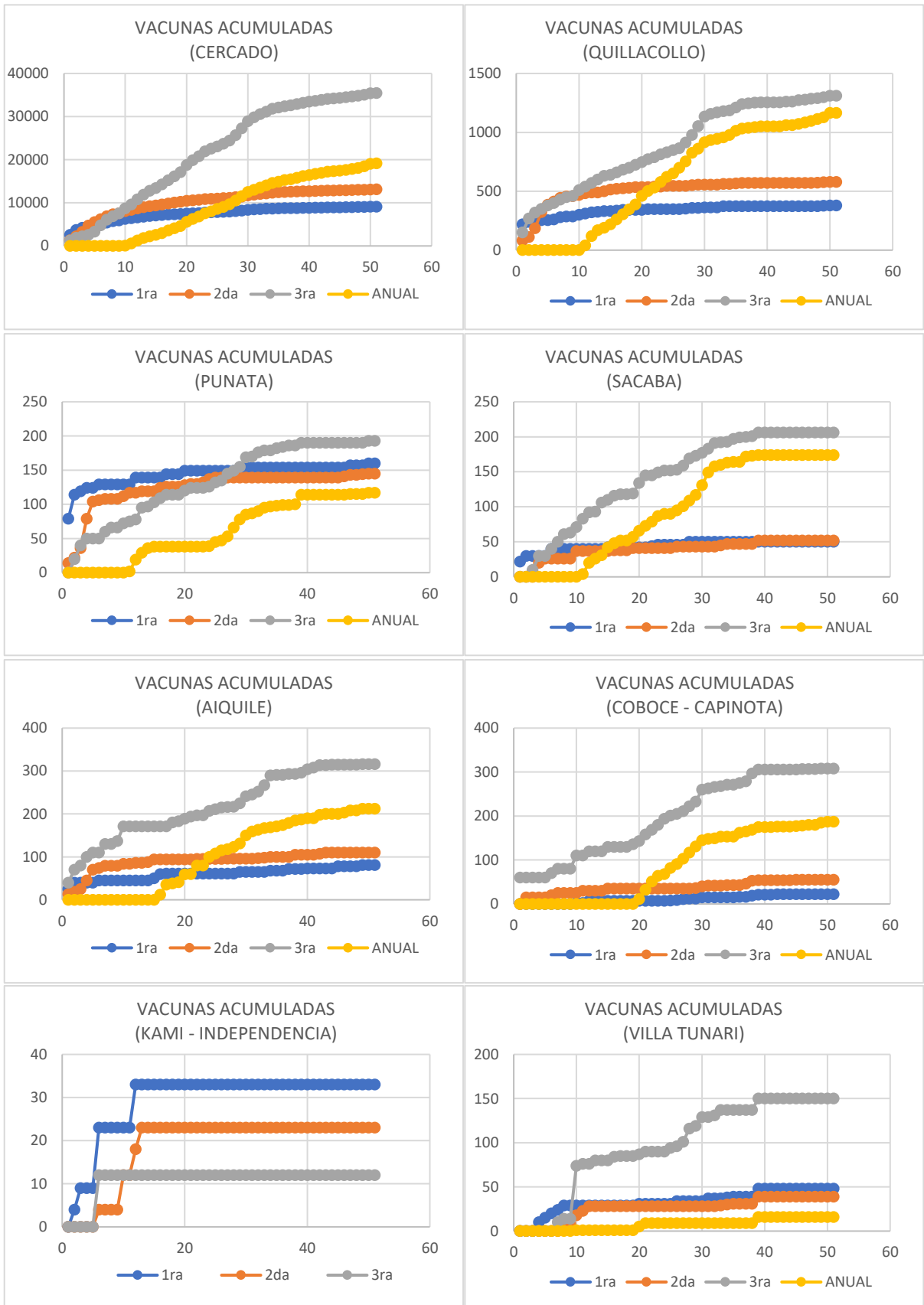
## VACUNAS KAMI POR SEMANA EPIDEMIOLOGICA PARA GRUPO ETAREO (CNS)



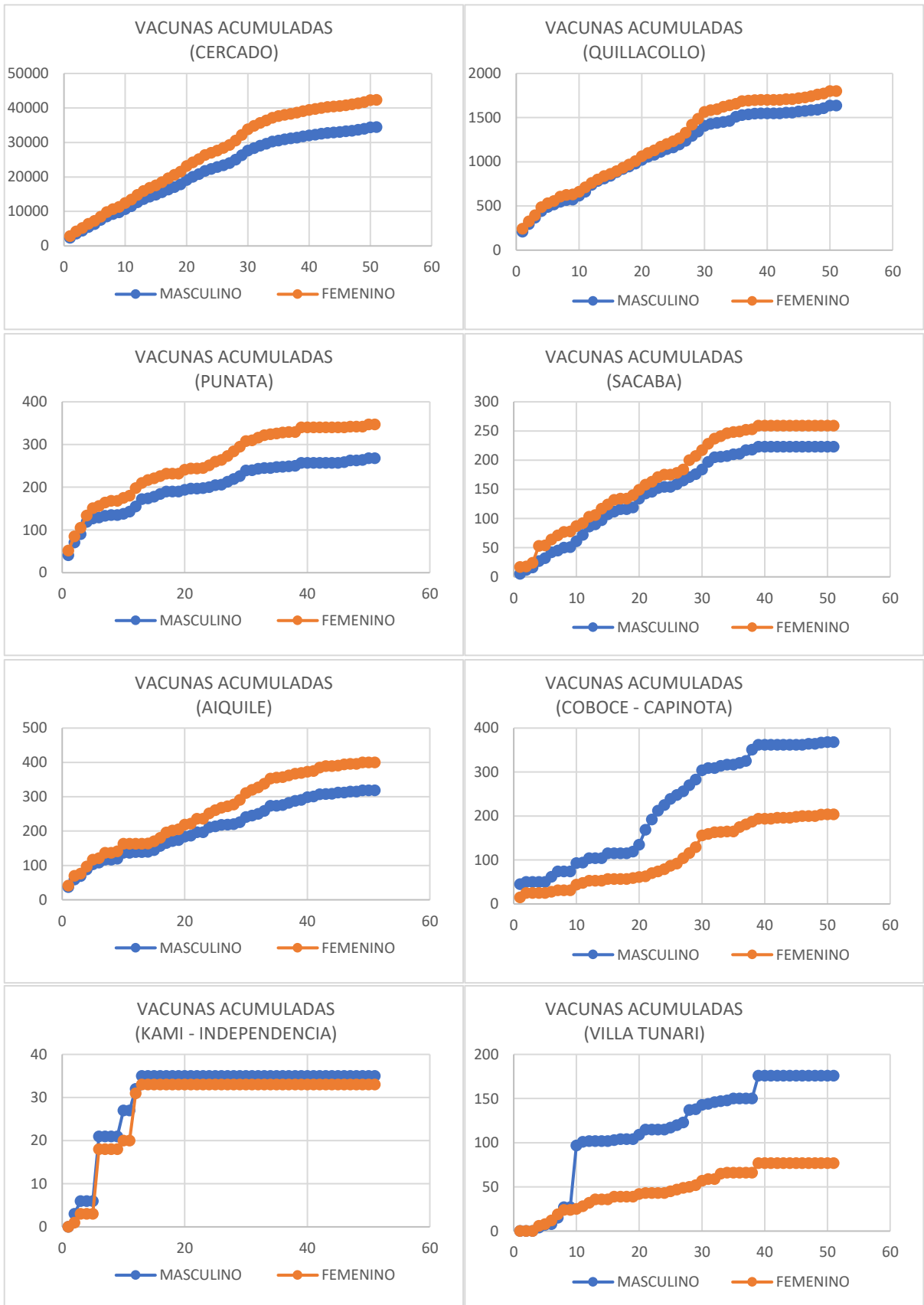
## VACUNAS VILLA TUNARI POR SEMANA EPIDEMIOLOGICA PARA GRUPO ETAREO (CNS)



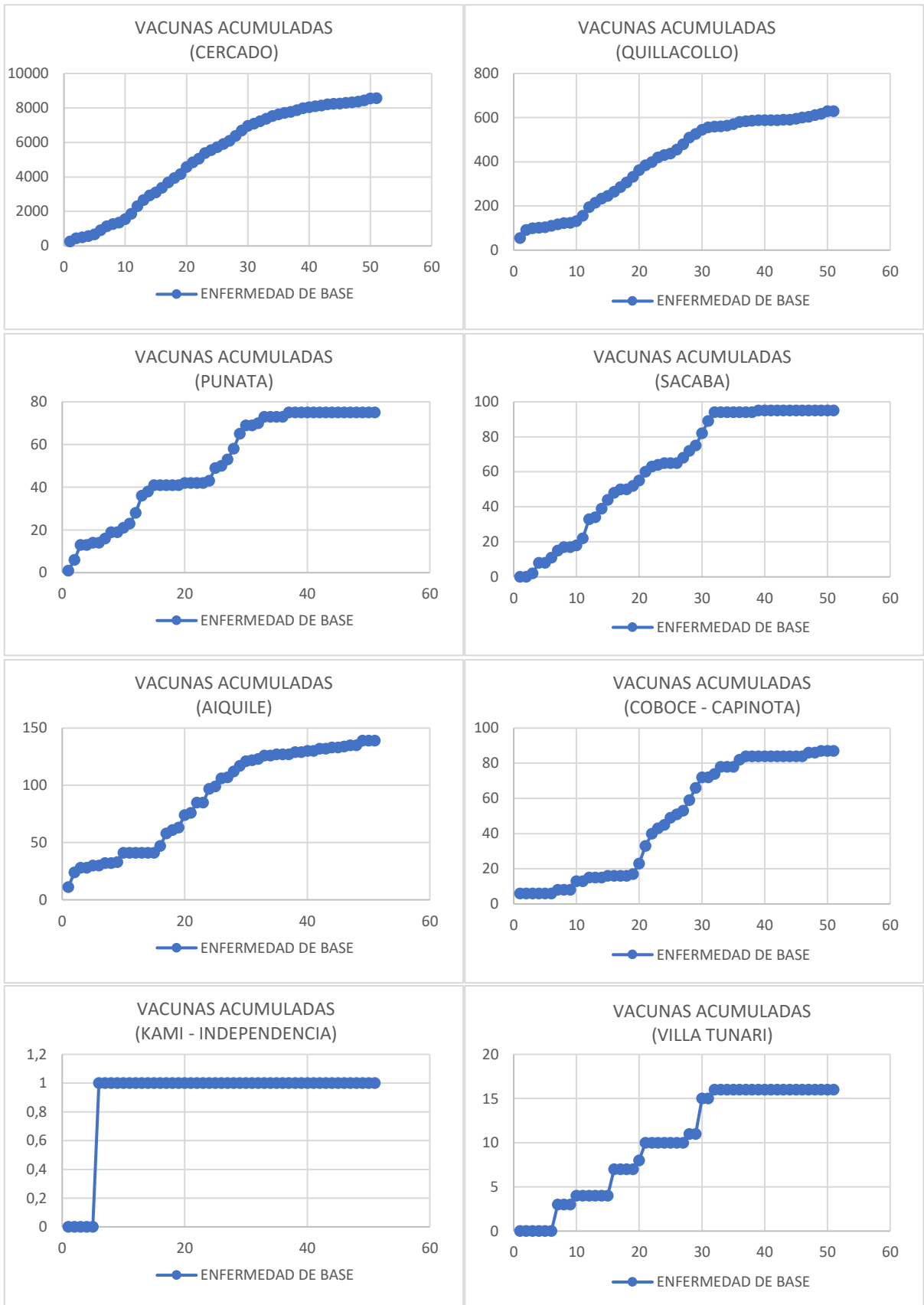
## VACUNAS POR SEMANA EPIDEMIOLOGICA PARA DOSIS APLICADA (CNS)



## VACUNAS POR SEMANA EPIDEMIOLOGICA PARA SEXO DEL PACIENTE (CNS)



## POBLACION CON ENFERMEDAD DE BASE VACUNADA (CNS)





## PERSONAL DE SALUD VACUNADO (CNS)

